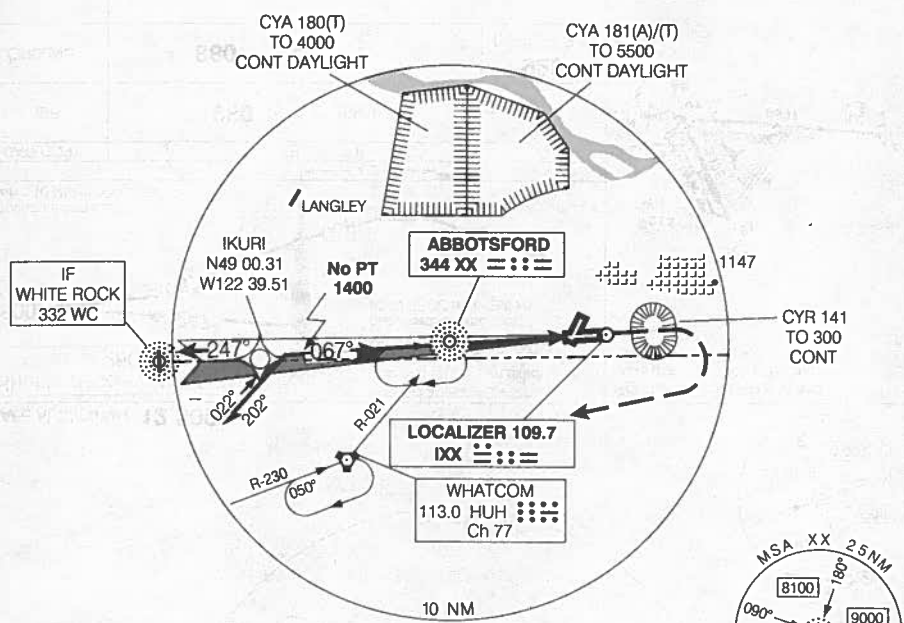


ILS RWY 07

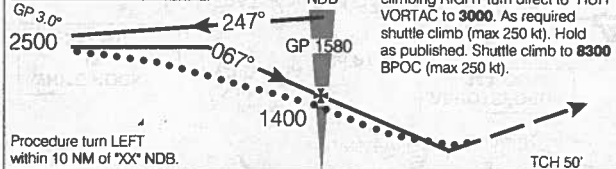
ATIS 119.8	ARR/DEP VICTORIA TERMINAL 132.7 290.8	TWR 121.0(OUTER) 119.4(INNER) 295.0 O/T RADIO(RCO) CRANBROOK 119.4 295.0(MF CZ)	GND 121.8	ELEV 194
				TDZE 07 175

CYXX



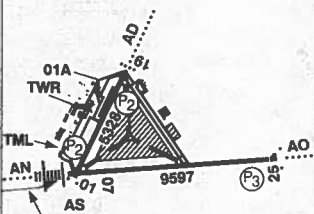
SAFE ALT 100 NM **12,800**

Shuttle descend to **2500**
(max 250 kt)



MISSED APPROACH
Climb to **600** on track of **067°** then climbing **RIGHT** turn direct to "HUH" VORTAC to **3000**. As required shuttle climb (max 250 kt). Hold as published. Shuttle climb to **8300** BPOC (max 250 kt).

Right hand circuits Rwy 01 and 07
Rwys 01A; 19A 1500 x 100 turf
Rwy 25 displaced 295'
ARCAL 119.4 (K)



CATEGORY	A	B	C	D
ILS	425	(250)	½ RVR 26	
LOC	720	(545)	1¼	
CIRCLING	880	(686)	2	920 (726) 2 ¼

'XX' NDB to MAP 4.3 NM					
Knots	70	90	110	130	150
Min.Sec	3:41	2:52	2:21	1:59	1:43

ILS RWY 07

Source of Canadian Civil Aeronautical Data: © 2009 NAV CANADA All rights reserved