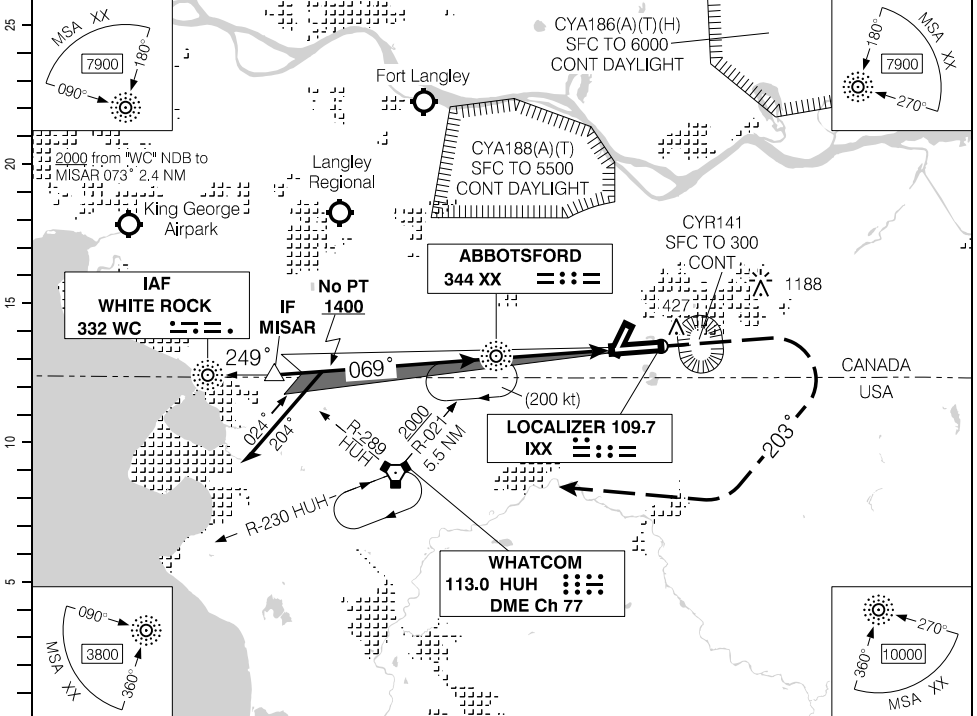


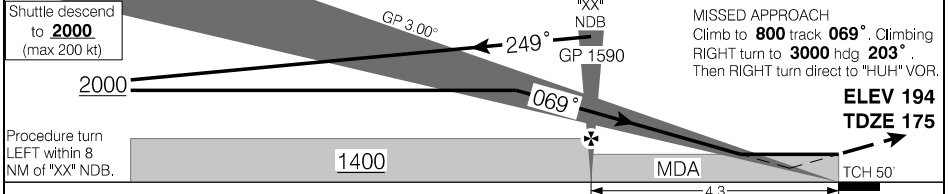
ILS RWY 07

490131N 1222136W VAR 17°E

ATIS – 119.8 TML Victoria – 132.7	TWR – 121.0 119.4 295.0 RADIO Cranbrook – 119.4 295.0	GND – 121.8	MFR
SAFE ALT 100 NM 12,800	LOC IXX 109.7	APCH CRS 069°	GP XX 1590
			LDA 9597



(NM)	12.3	11	10	9	8	7	5.6	5	4	3	1.7	DIST FROM MAP
	4130	3720	3400	3080	2760	2450	2000	1810	1490	1170	760	ALT (3.00° APCH PATH)



	CATEGORY	A	B	C	D
		ILS	425	(250)	1 RVR 50
"XX" NDB to MAP 4.3 NM	LOC	760	(585)	1¼	
Knots	ft/min	Min:Sec	CIRCLING		
70	370	3:41	940	(746)	2¼
90	480	2:52			
110	580	2:21			
130	690	1:59			
150	800	1:43			

ILS RWY 07

CYXX

EFF 29 MAR 18

Source of Canadian Civil Aeronautical Data: © 2019 NAV CANADA All rights reserved