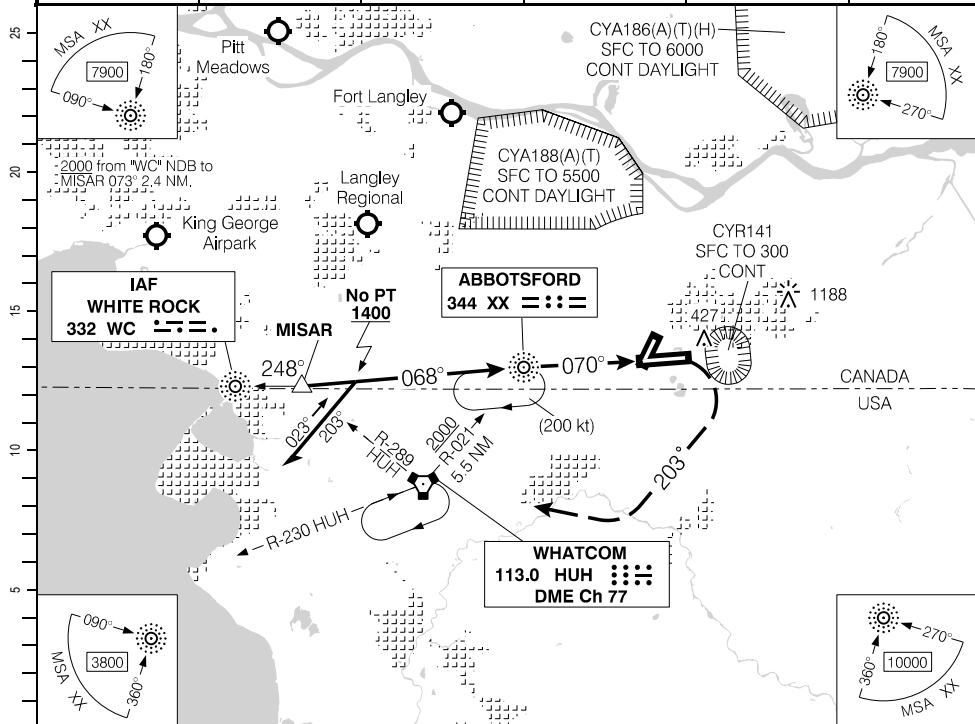


NDB RWY 07

490131N 1222136W VAR 17°E

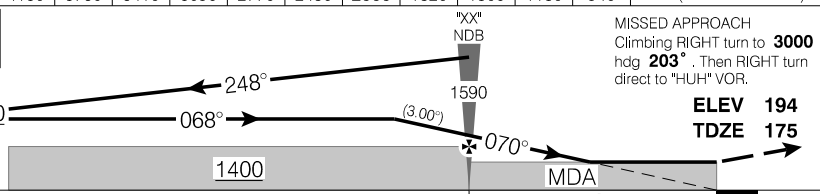
ATIS – 119.8 TML Victoria – 132.7	TWR – 121.0 119.4 295.0 RADIO Cranbrook – 119.4 295.0	GND – 121.8 MF			
SAFE ALT 100 NM <b>12,800</b>	NDB XX <b>344</b>	APCH CRS <b>070°</b>	MIN ALT XX <b>1400</b>	LDA <b>9597</b>	AN 



(NM)		12.3	11	10	9	8	7	5.6	5	4	3	2.2	DIST FROM MAP
		4130	3730	3410	3090	2770	2450	<b>2000</b>	1820	1500	1180	940	ALT (3.00° APCH PATH)

Shuttle descend to **2000** (max 200 kt)

Procedure turn LEFT within 8 NM of "XX" NDB.



MISSED APPROACH  
Climbing RIGHT turn to **3000** hdg **203°**. Then RIGHT turn direct to "HUH" VOR.

**ELEV 194**  
**TDZE 175**

	CATEGORY	A	B	C	D
	NDB	<b>940</b>		(765)	1¼
"XX" NDB to MAP 4.3 NM					
	Knots	ft/min	Min:Sec		
	70	370	3:41		
	90	480	2:52		
	110	580	2:21		
	130	690	1:59		
	150	800	1:43		

NDB RWY 07

CYXX

EFF 10 OCT 19

Source of Canadian Civil Aeronautical Data: © 2019 NAV CANADA All rights reserved