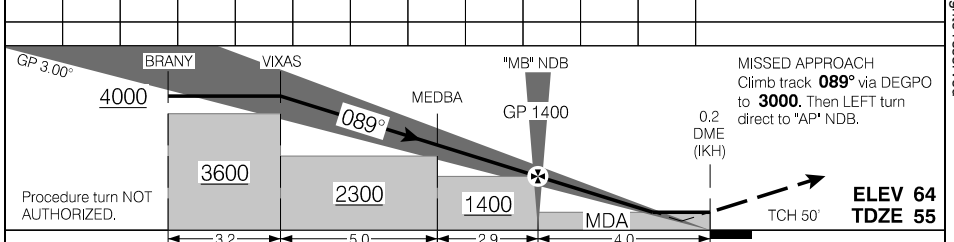
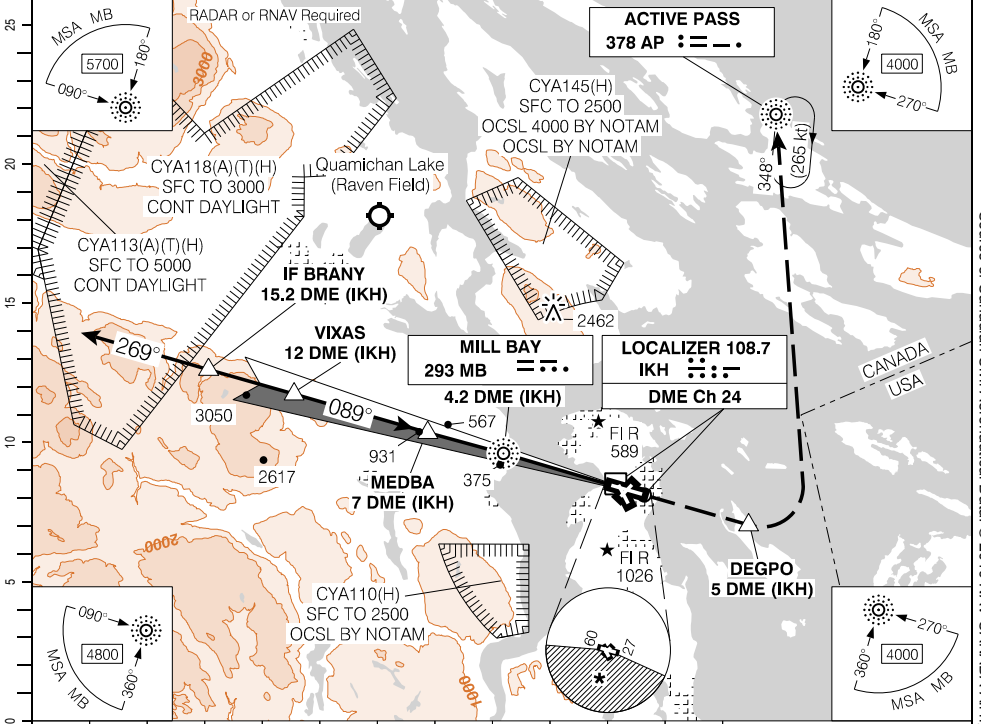


ILS RWY 09

483850N 1232533W VAR 17°E

ATIS - 118.8 LWIS - 118.8	ARR - 125.95	TWR - 119.7 239.6 RADIO Kamloops - 119.7	GND - 121.9 361.4	ARCAL 119.7(K)*
SAFE ALT 100 NM <b>12,800</b>	LOC IKH <b>108.7</b>	APCH CRS <b>089°</b>	GP MB <b>1400</b>	LDA <b>6998</b>



		CATEGORY	A	B	C	D
		ILS/DME	<b>305</b>	(250)	1 RVR 50	
"MB" NDB to MAP 4.0 NM		LOC/DME	<b>360</b>	(305)	1 RVR 50	
Knots	ft/min	Min:Sec				
70						
90						
110						
130						
150						
		CIRCLING	* <b>600</b> (536) 1%	* <b>660</b> (596) 1%	* <b>700</b> (636) 2	* <b>980</b> (916) 2%

ILS RWY 09

EFF 19 JUL 18

CYYJ